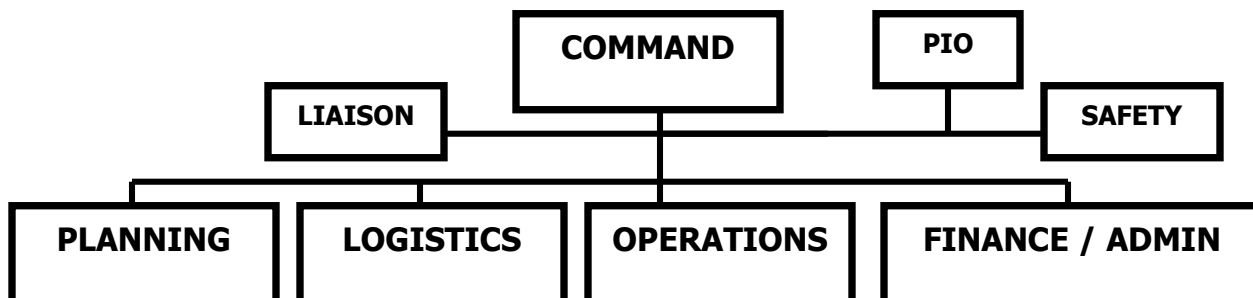


SUBURBAN FIRE CHIEFS ASSN. COMMAND ORGANIZATION



Alternative Floor Plan

Roof		
2 nd		
1 st		
Basement		

COMMAND STATUS ISSUES

- Develop an "ahead of time" plan
- "All Clear" primary/secondary search
- Adequate Command Staff
- Adequate Firefighting Staff
- SOP's being followed
- Reporting process from sectors
- Rehabilitation
- Building Stability
- Interior Atmospheric CO monitoring
- Construction Equipment
- Property Conservation
- Entire System Status Report
- Estimate the length of command required
- Coordinate timely progress reports
- Maintain communications reporting system
- Utilize standard-order model to structure communications
- Demobilize
- Red Cross
- Weather
- Security

Action Plan

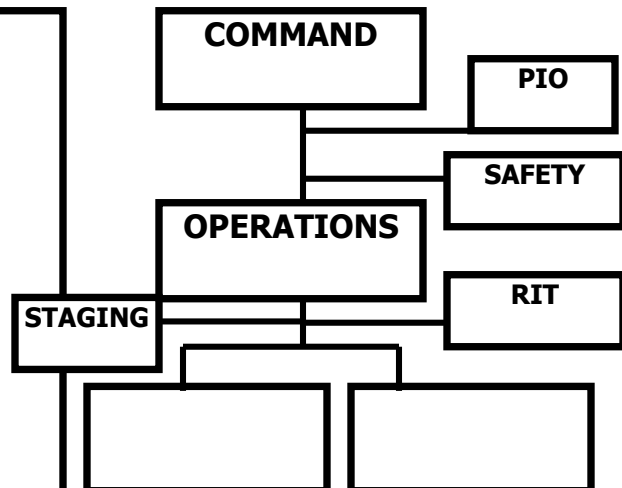
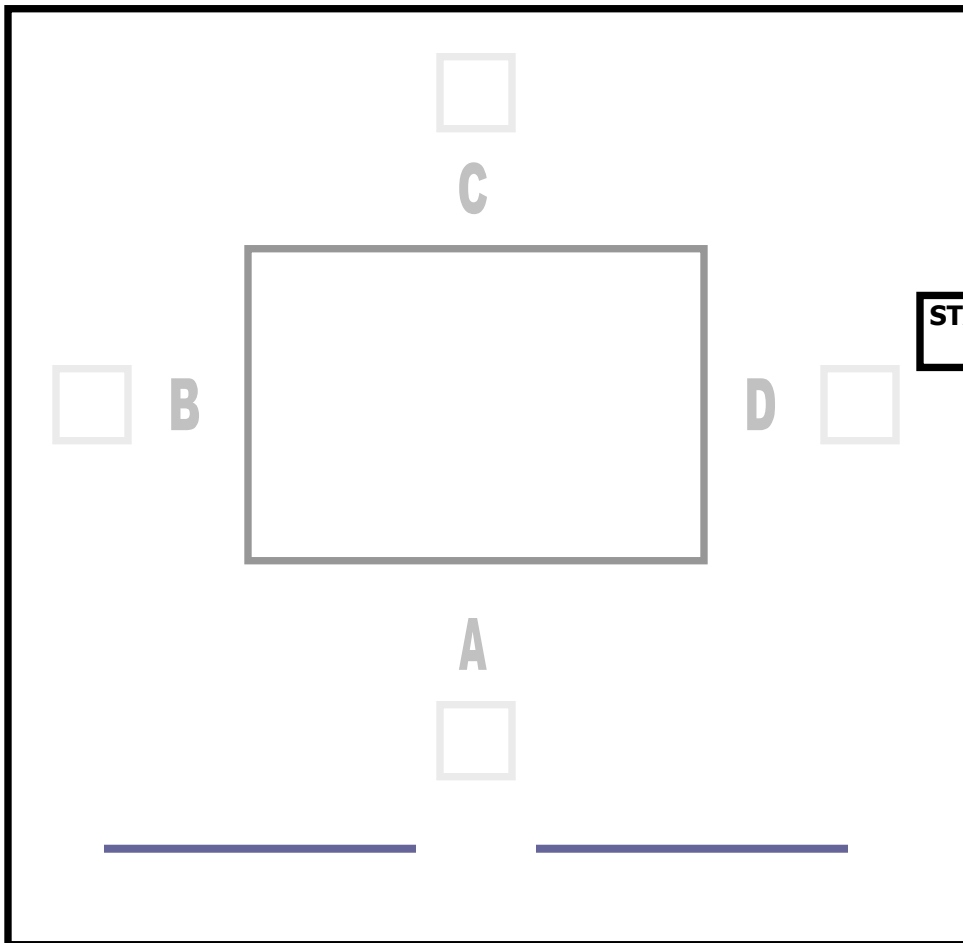
Date _____ Author _____ Time _____

Objectives / Sizeup _____

Critical Factors _____

Safety Factors _____

SUBURBAN FIRE CHIEFS ASSN. COMMAND ORGANIZATION



**On Scene
Committed**

**Staged
Location**

E
E
E
E
E
E
Q
Q
TA
TA
TA
R
R

E
E
E
E
E
E
Q
Q
TA
TA
TA
R
R

STRATEGY

Offensive

Defensive

TACTICAL OBJECTIVES

	Life Safety
	Primary Search
	Accountability
	Water Supply
	Resources
	Exposures
	Utility Gas/Electric
	Locate
	Confine
	Extinguish
	Secondary Search
	Overhaul
	VENTILATION
	SALVAGE

Dispatch
Arrival
Benchmark Time
Address
Non-Fire Agencies
Chart Start Time
Chart Stop Time

Field Notes